

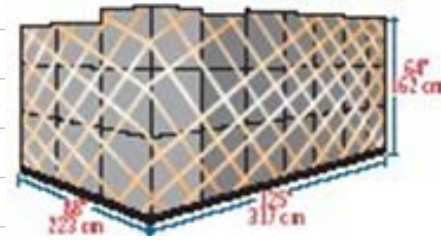
AIR FREIGHT CONTAINER SPECIFICATIONS

INTRODUCTION

The following guide to airfreight containers, also called Unit Load Devices (ULD), has been developed from materials supplied by IATA (International Air Transport Association) and the ATA (Air Transport Association of America). This guide lists and illustrates the average external dimensions and weight limitations of the primary containers in use today. Exact dimensions and weight limitations will vary by manufacturer and availability will vary by air carrier and tradelane.

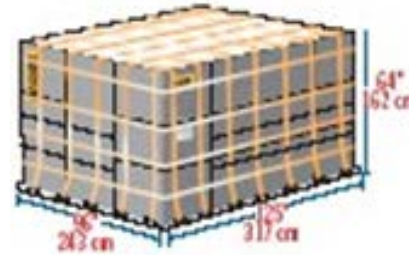
88" PALLET

- » IATA ULD Code: PIP Classification: 88" Pallet with net
- » Suitable for: B747, B777, DC-10
- » Maximum volume: 11.9 cu. m (420 cu. ft.)
- » Maximum gross weight: 747/DC-10: 6033 kg (13300 lb)
- » 767: 5103 kg (1127 lb)
- » 777/DC-10: 4626 kg (10501 lb)
- » Can be loaded to 96" (162 cm) and 118" (300 cm) on freighters



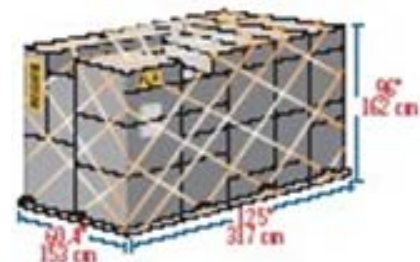
96" PALLET

- » IATA ULD Code: P6P 10ft flat pallet with net
- » Also known as: P6A, P6C, P6Q, PMA, PMC, PMP, PQP
- » Classification: LD-9
- » Rate Class: Type 2BG
- » Suitable for: A300, A310, A330, A340, B747, B767, B777, DC-10, MD-11, L1011
- » Maximum volume: 21.2 cu.m (747 cu. ft.)
- » Maximum gross weight: 6,804 kg (15000 lb)
- » Can be loaded to 96" (162 cm) and 118" (300 cm) on freighters 118" (300 cm) on freighters



HALF PALLET

- » IATA ULD Code: PLA half pallet with net
- » Also known as: PLB, FLA, P9A, P9B, P9P, P9R, P9S
- » Classification: HP
- » Rate Class: 6
- » Suitable for: Lower deck: B747, B777
- » Main deck: B707F, B727F, B737F
- » Maximum volume: 7.2 cu.m (254 cu. ft.)
- » Maximum gross weight: 3175 kg (6999 lb)



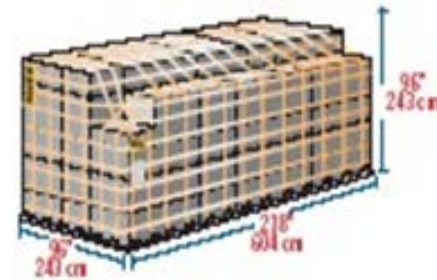
16 FT PALLET

- » IATA ULD Code: PRA 16ft flat pallet with net
- » Also known as: PMA, P4A, P4M, PZA
- » Classification: MDP
- » Rate Class: Type 1P
- » Suitable for: B747, B747Combi
- » Maximum volume: 26.8 cu. m (946 cu. ft.)
- » Maximum gross weight: 11300 kg (24991 lb)



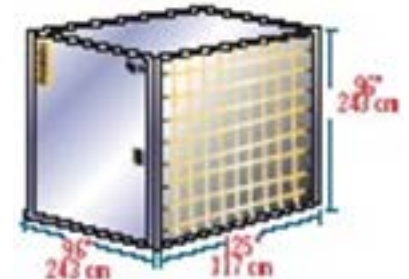
20 FT PALLET

- » IATA ULD Code: PGA 20ft flat pallet with net
- » Also known as: PGA, PGE, PGF, PSA, PSG, P7A, P7E, P7F, P7G
- » Classification: M-6
- » Rate Class: Type 1
- » Suitable for: B747F, B747Combi
- » Maximum volume: 33.2 cu. m (1174 cu. ft.)
- » Maximum gross weight: 11340 kg (25000 lb)



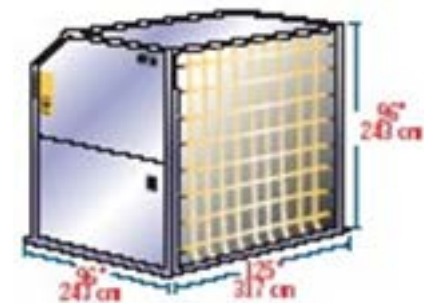
AQ6

- » IATA ULD Code: AMA Rectangular Container on P6P Base
- » Also known as: AMF, AMG, AMK, AMP, AQA, AOD, AQ6
- » Classification: M-1
- » Rate Class: Type 2
- » Suitable for: B747F, B747Combi
- » Maximum volume: 17.5 cu. m (618 cu. ft.)
- » Maximum gross weight: 6804 kg (15000 lb)



AQ7

- » IATA ULD Code: AMD Contoured Container on P6P Base
- » Also known as: AQA, AQ7
- » Classification: M1H Rate
- » Class: Type 2H
- » Suitable for: B747F, B747Combi
- » Maximum volume: 19.9 cu. m (702 cu. ft.)
- » Maximum gross weight: 6800 kg (14991 lb)



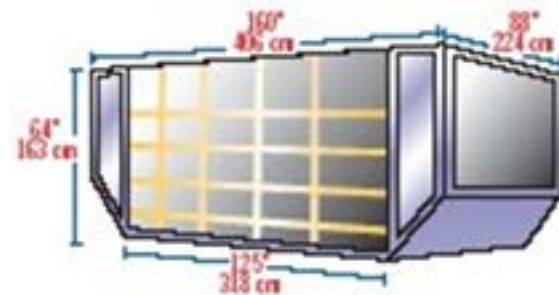
M-6

- » IATA ULD Code: AGA 20ft Box
- » Container also known as: ASE
- » Classification: M-6
- » Rate Class: Type 1
- » Suitable for: B747F, B747Combi
- » Maximum volume: 33.0 cu. m
(1165 cu. ft.)
- » Maximum gross weight: 11340 kg (25000 lb)



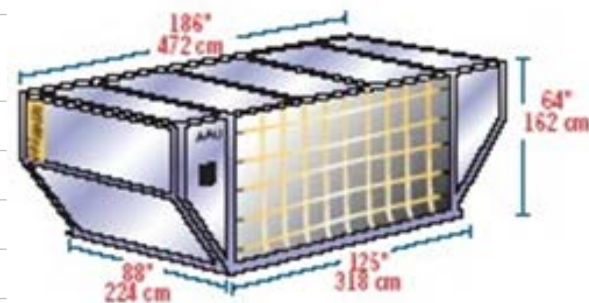
LD-26

- » IATA ULD Code: AAF
- » Classification: LD-26
- » Suitable for: B747, B777, DC-10
- » Maximum gross weight:
747/DC-10: 6033 kg (13300 lb)
777/DC-10: 4626 kg (10501 lb)



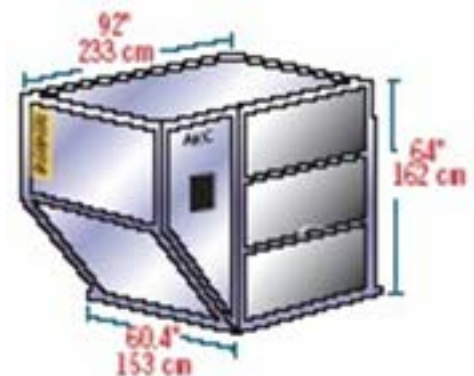
LD-29

- » IATA ULD Code: AAU Contoured Container on P1P Base
- » Classification: LD-29
- » Rate Class: Type 5
- » Suitable for: B747
- » Internal volume: 14.2 cu. m (501 cu. ft.)
- » Maximum gross weight: 6033 kg (13300 lb)



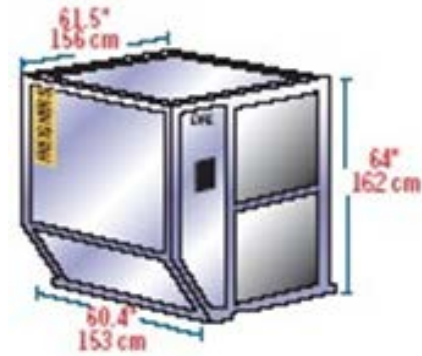
LD-1

- » IATA ULD Code: AKC Contoured
- » Container Also known as: AVC, AVD, AVK, AVJ Forkable: AVY
- » Classification: LD-1
- » Rate Class: Type 8
- » Suitable for: B747, B767, B777, MD-11
- » Maximum volume: 4.8 cu. m (169.5 cu. ft.)
- » Maximum gross weight: 1588 kg (3500 lb)



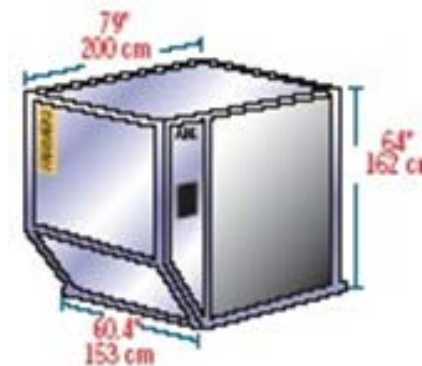
LD-2

- » IATA ULD Code: DPE Contoured Container
- » Also known as: APA, DPA
- » Forkable: DPN
- » Classification: LD-2
- » Rate Class: Type 8D Suitable for: B767
- » Maximum volume: 3.4 cu. m (120 cu. ft.)
- » Maximum gross weight: 1225 kg (2700 lb)



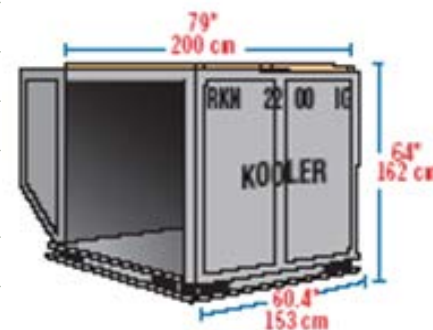
LD-3

- » IATA ULD Code: AKE Contoured Container
- » Also known as: AKE, AVA, AVB, AVC, AVK, DVA, DVE, DVP, XKS, XKG
- » Forkable: AKN, AVN, DKN, DVN, XKN
- » Classification: LD-3
- » Rate Class: Type 8
- » Suitable for: A300, A310, A330, A340, B747, B767, B777, DC-10, MD-11, L1011
- » Maximum volume: 4.3 cu. m (152 cu. ft.)
- » Maximum gross weight: 1588 kg (3500 lb)



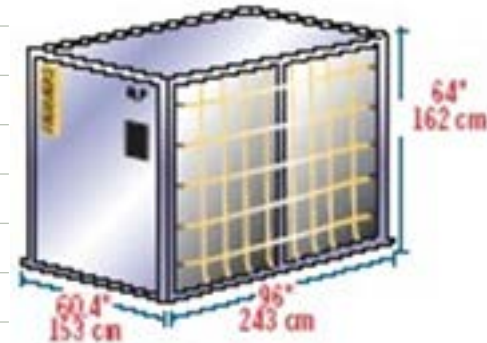
INSULATED LD-3

- » IATA ULD Code: RKN
- » Classification: LD-3
- » Rate Class: Type 8
- » Suitable for: A300, A310, A330, A340, B747, B767, B777, DC-10, MD-11, L1011
- » Maximum volume: 3.0 cu. m (109 cu. ft.)
- » Maximum gross weight: 1588 kg (3501 lb)
- » Temperature Control Range: -20C to +20C



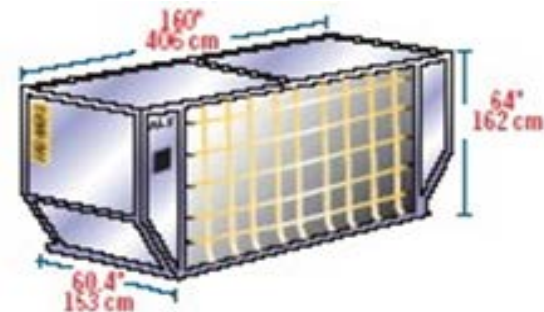
LD-4

- » IATA ULD Code: ALP Rectangular Container
- » Also known as: ALD, AWD, AWZ, DLP
- » Forkable: ALB, ALC, AWB, AWC
- » Classification: LD-4
- » Rate Class: Type 8
- » Suitable for: B767, B777
- » Maximum volume: 5.7 cu. m (201 cu. ft.)
- » Maximum gross weight: 2449 kg (5399 lb)
- » Temperature Control Range: -20C to +20C



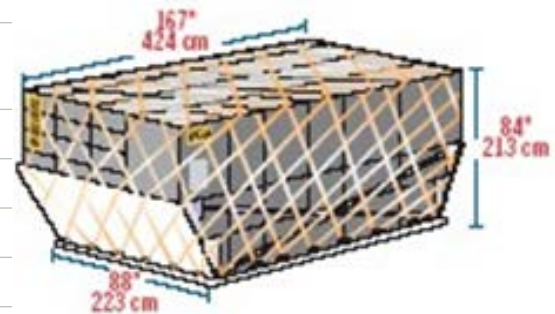
LD-6

- » IATA ULD Code: ALF Contoured Container
- » Also known as: AWD, AWF
- » Forkable: AWC
- » Classification: LD-6
- » Rate Class: Type 6W
- » Suitable for: A300, A310, A330, A340, B747, B767, B777, MD-11, L1011
- » Maximum volume: 8.9 cu. m (314 cu. ft.)
- » Maximum gross weight: 3175 kg (7000 lb)



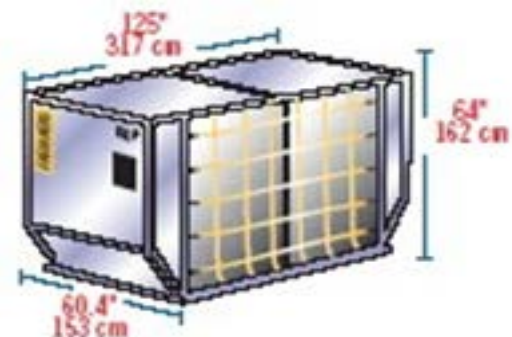
LD-7

- » IATA ULD Code: XAW P1P Pallet with fixed angle wings and net
- » Classification: LD-7
- » Rate Class: Type 5
- » Suitable for: Wide body: All aircraft
- » Maximum volume with overhang: 14.0 cu. m (494 cu. ft.)
- » Maximum gross weight: 5000 kg (11023 lb)



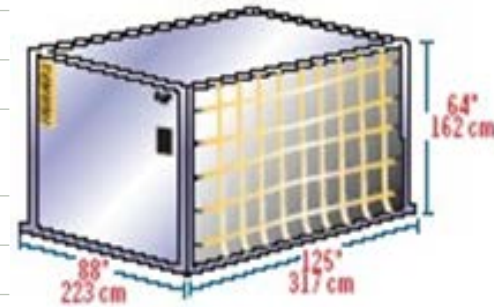
LD-8

- » IATA ULD Code: DQF
- » Also known as: ALE, ALN, DLE, DLF, DQP, MQP
- » Classification: LD-8
- » Rate Class: Type 6A Suitable for: B767
- » Maximum volume: 6.85 cu. m (242 cu. ft.)
- » Maximum gross weight: 2450 kg (5401 lb)



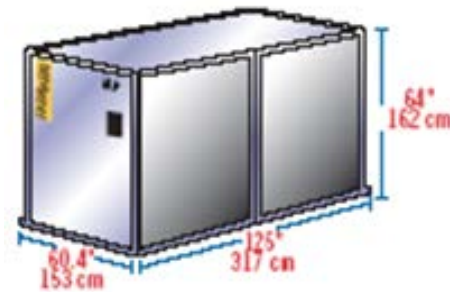
LD-9

- » IATA ULD Code: AAP Enclosed Pallet on P1P base
- » Also known as: AA2, XAG, XAV
- » Classification: LD-9
- » Rate Class: Type 5
- » Suitable for: A300, A310, A330, A340, B747, B767, DC-10, MD-11, L1011
- » Maximum volume: 9.1 cu. m (321 cu. ft.)
- » Maximum gross weight:
- » 4624 kg (10194 lb) lower deck
- » 6000 kg (13227 lb) main deck



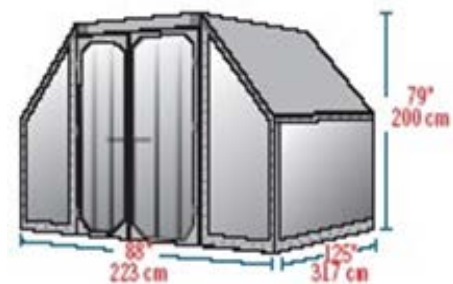
LD-11

- » IATA ULD Code: ALP Rectangular Container
- » Also known as: ALD, AW2, AWB, AWD, AWZ, DLP, DWB, MWB
- » Refrigerated version: RQB, RWD, RWZ
- » Classification: LD-11
- » Rate Class: Type 6
- » Suitable for: A300, A310, A330, A340, B747, B767, DC-10, MD-11, L1011
- » Internal volume: 7.2 cu. m (253 cu. ft.)
- » Maximum gross weight: 3176 kg (7002 lb)



A-2

- » IATA ULD Code: DAA
- » Classification: A-2
- » Suitable for: B767, B747F, DC-8, DC-10, A300/F
- » Internal volume: 12.6 cu. m (444 cu. ft.)
- » Maximum gross weight: 6033 kg (13300 lb)



ABOUT SHAPIRO

Shapiro, a third generation family-owned business founded in 1915, provides creative and flexible logistics services. With six offices, over 100 employees, and worldwide strategic alliances, Shapiro is the supply chain partner that delivers customized, compliant, and reliable solutions to address your specific import and export needs. Only Shapiro has an experienced and personable staff that truly cares about your company and commits themselves to proactively achieving your business goals.

Baltimore Headquarters
1215 E. Fort Ave. Ste 201
Baltimore, MD 21230
www.shapiro.com

Phone
1-888-you-1915
you@shapiro.com